

Next Station - Utrecht Central Station Digital 3D

**Outside = Inside / Realization of a 3D Digital Twin of
Utrecht Central Station**

Jeannet Kober
Product owner Stationsdata



Jeannet Kober – Product Owner Stationsdata (GIS)



- Jean Keultjes – IT Lead
- Remco Bunder – Drone pilot



How did we do it?

- Idea
- Collection
- Operation
- Model
- Application
- What next?

Idea

Objectives

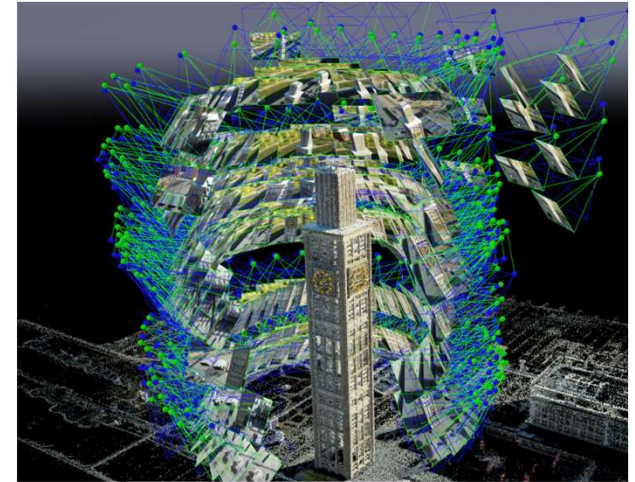
- **"Outside=inside"**; All the relevant station information you need to do your job well is available in real time.
- There is only **"one version of the truth"**, Station data is recorded in 1 place, actively managed and improved for multiple use. This prevents confusion, mistrust and unnecessary differences analyses.
- **"One stop shop"**; All information products and services in 1 place; easy to find and efficient.

Vision

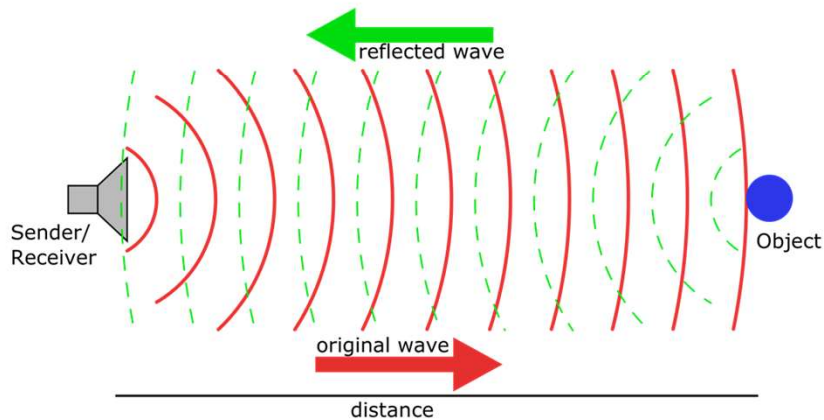
Our stations exist **virtually**. All the **relevant information** you need to do your job at NS Stations well is available on a **screen**. You can **act quickly**; we manage assets that you know in real time whether they contribute to customer satisfaction and healthy business operations.

Collection methods

- Photogrammetry
- LIDAR



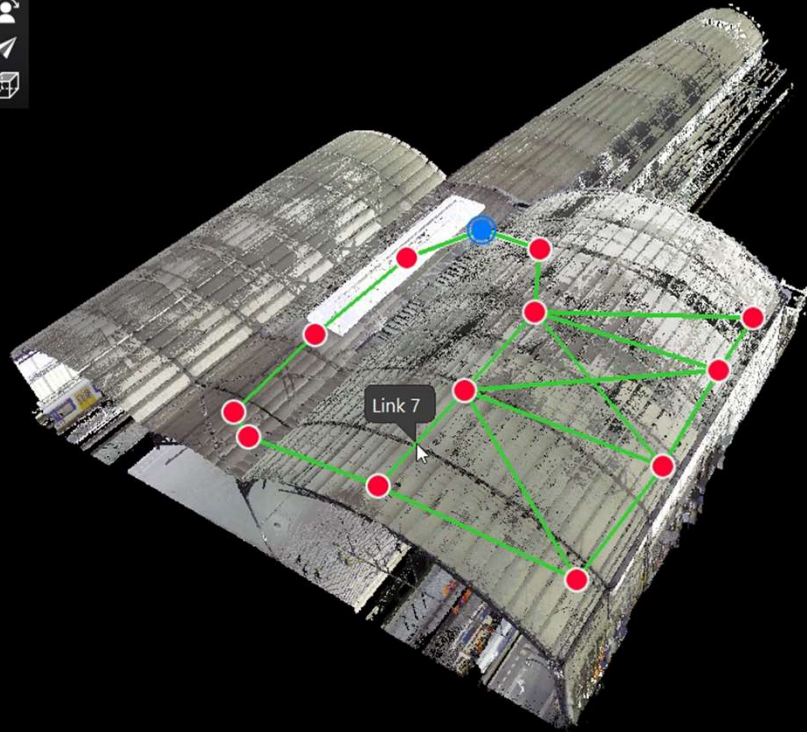
Light Detection And Ranging of Laser Imaging Detection And Ranging



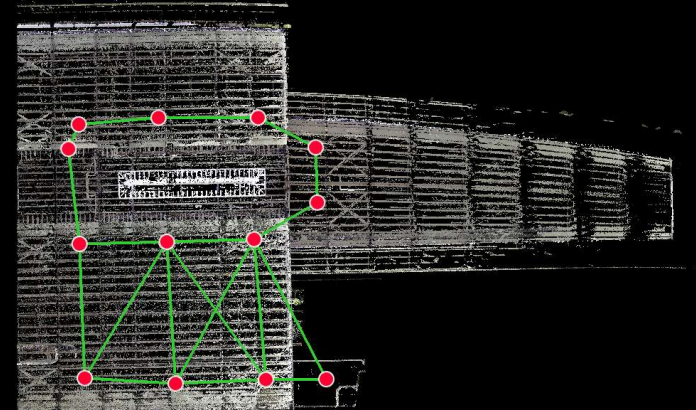
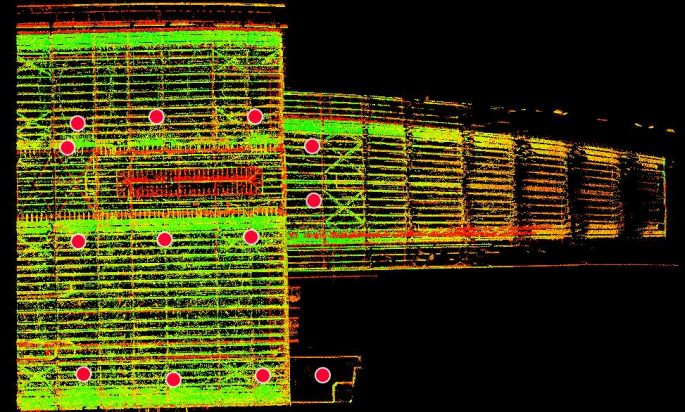
R







Bundle Cloud



Operation



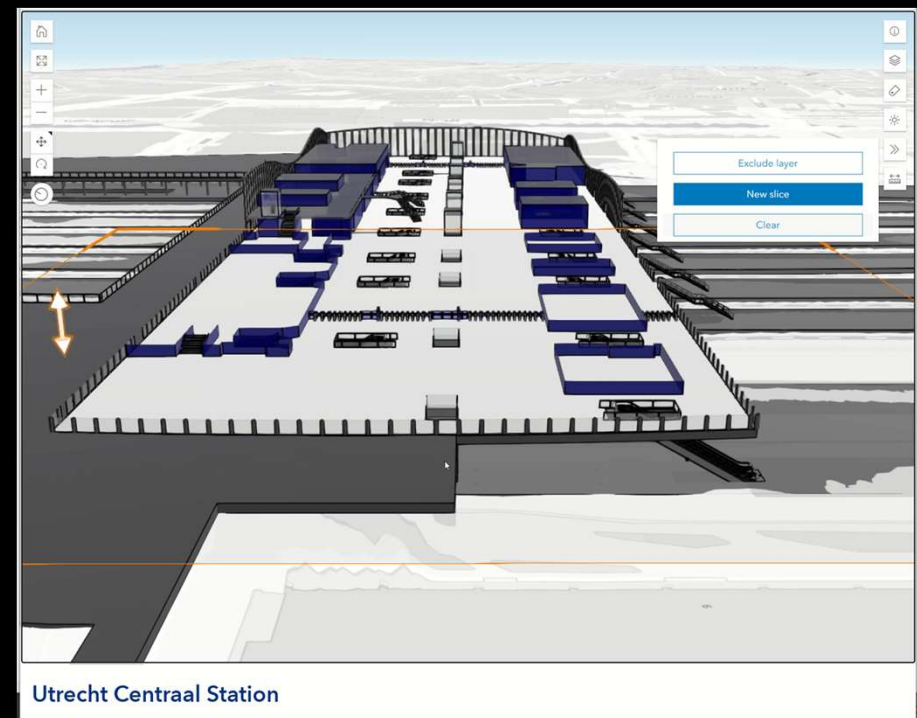
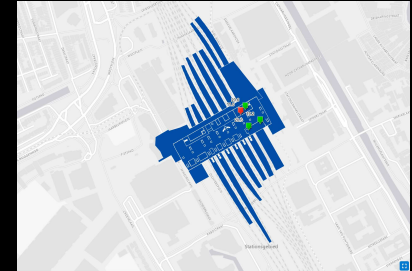
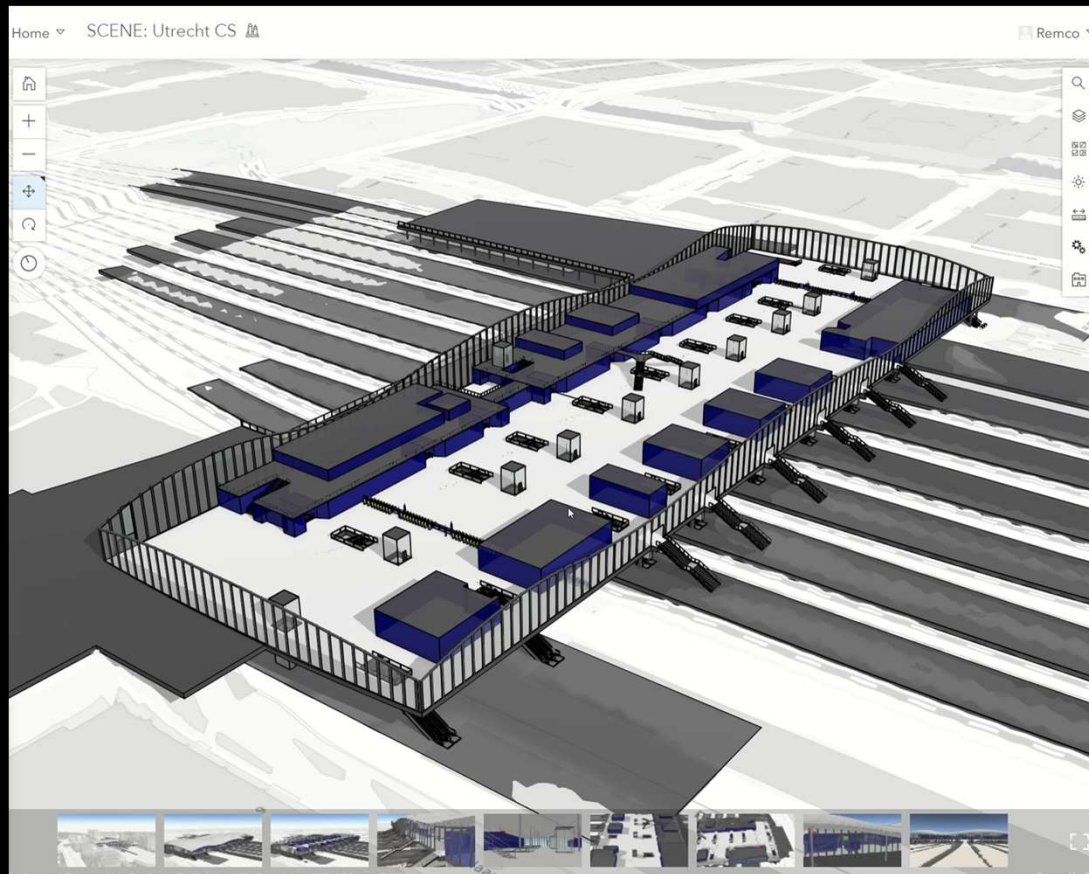
Edit



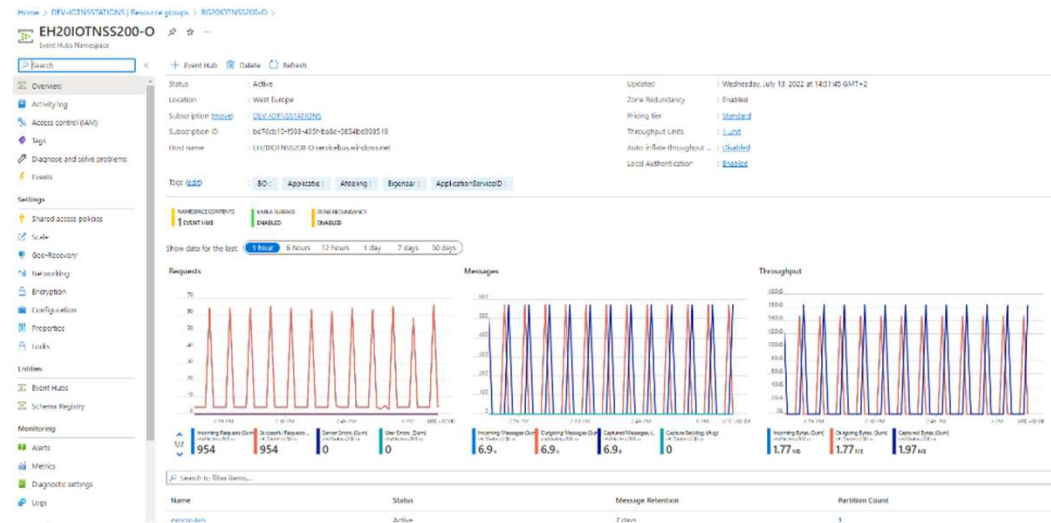


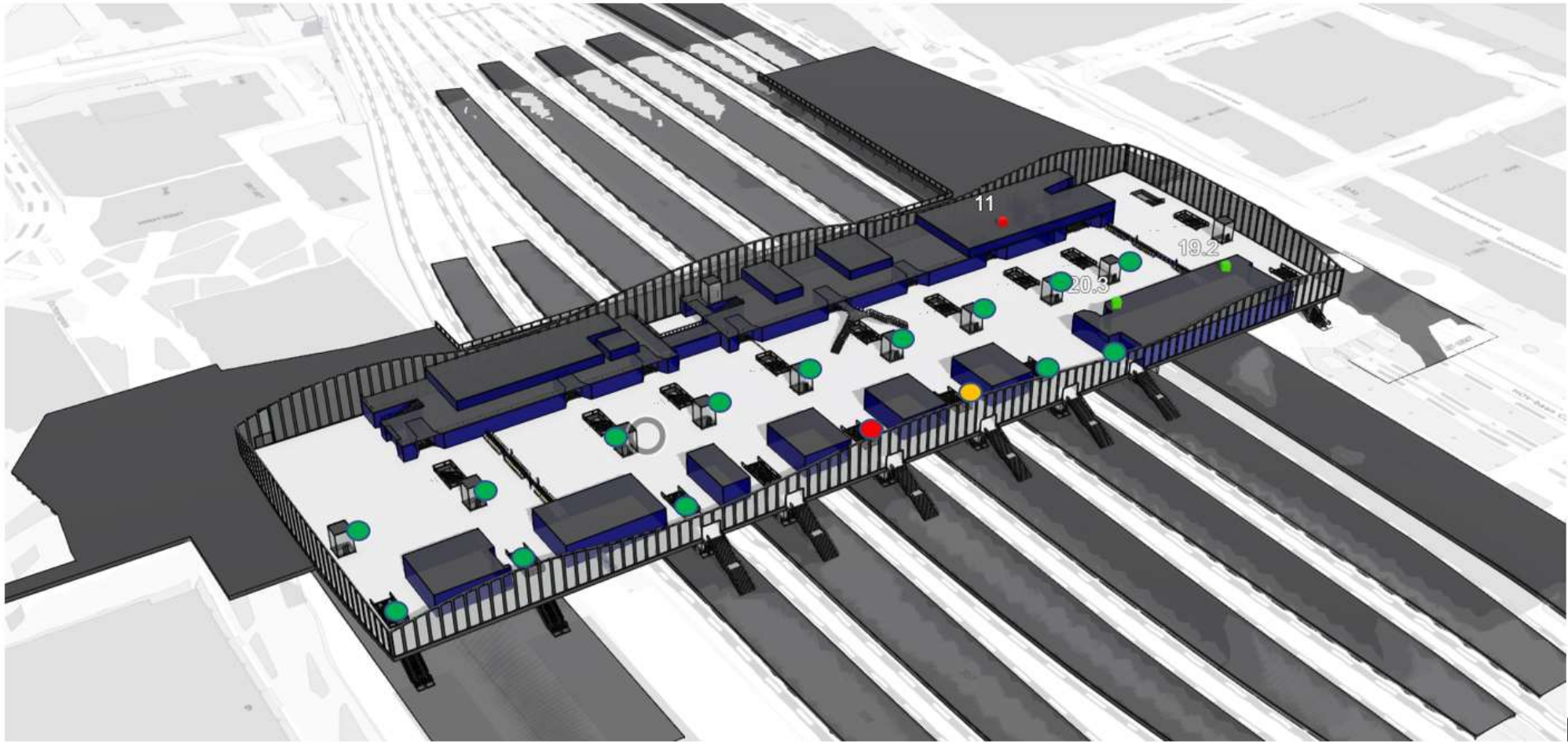


BIM light

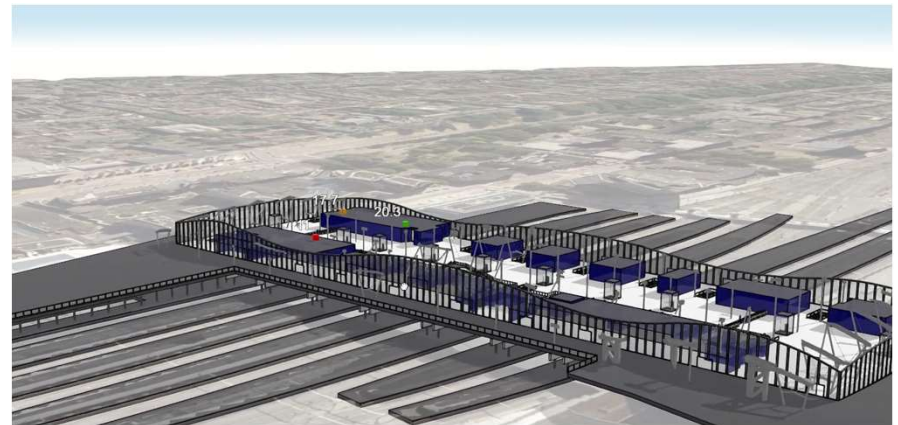


Azure IOT





Next Station – Utrecht CS



What next?

- IoT platform
- Installing and unlocking 1001 sensors
- Visualization in Stationsdata

- Ideas
- Questions

